
INTRODUCTION

WIFI,Bluetooth,Zigbee Antenna WLAN-PCB(45 x10)-1.13-10cm-U.FL

1. GENERAL DESCRIPTION

Model No
WLAN -PCB-(45 x10)-1.13-10cm-U.FL

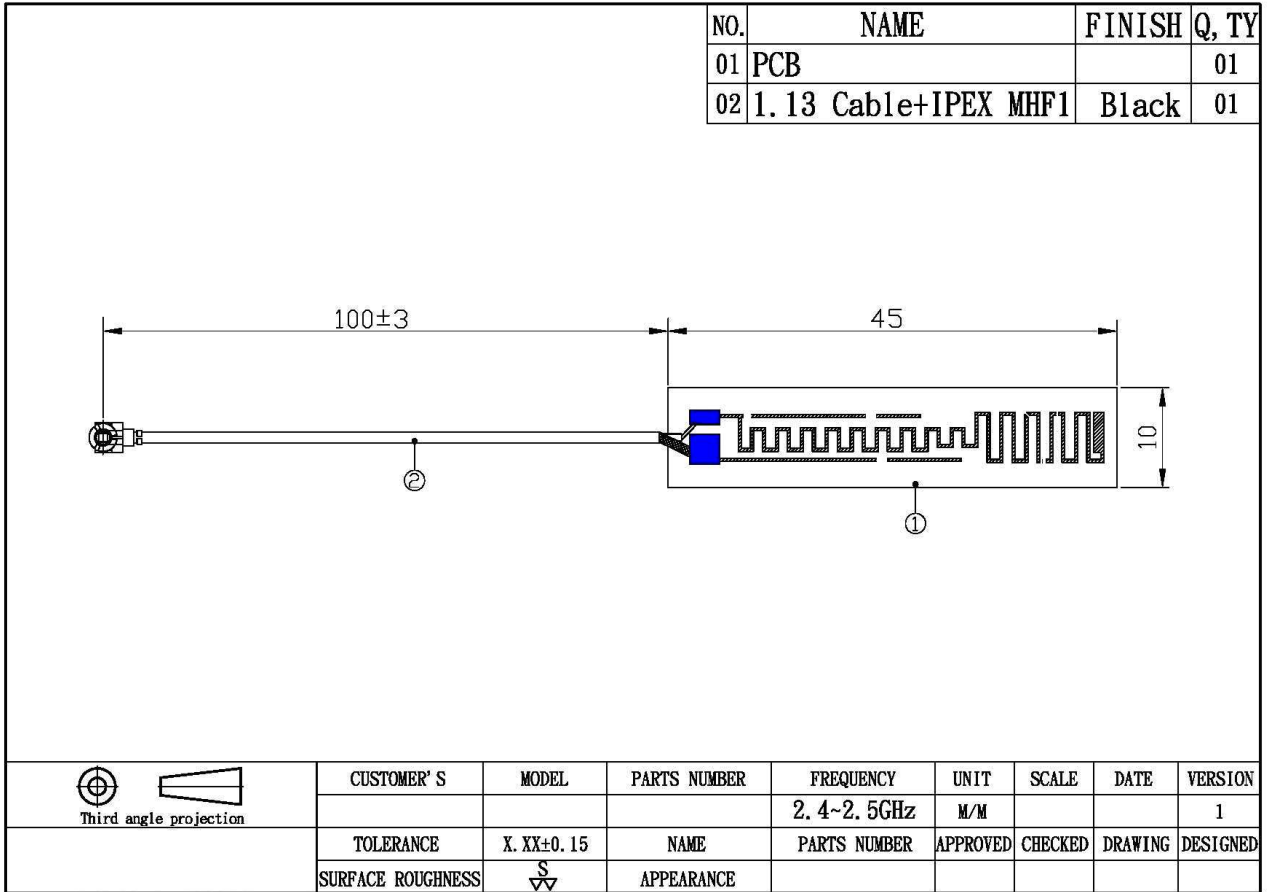
1.1 Electrical Properties

Parameter	Description
Frequency Band	2.4~2.5GHz
Nominal Impedance	50 ohm
Polarization	Vertical
Return Loss	2.44GHz (-32.717)
V.S.W.R	2.0:1
Note: Gain includes the cable loss	

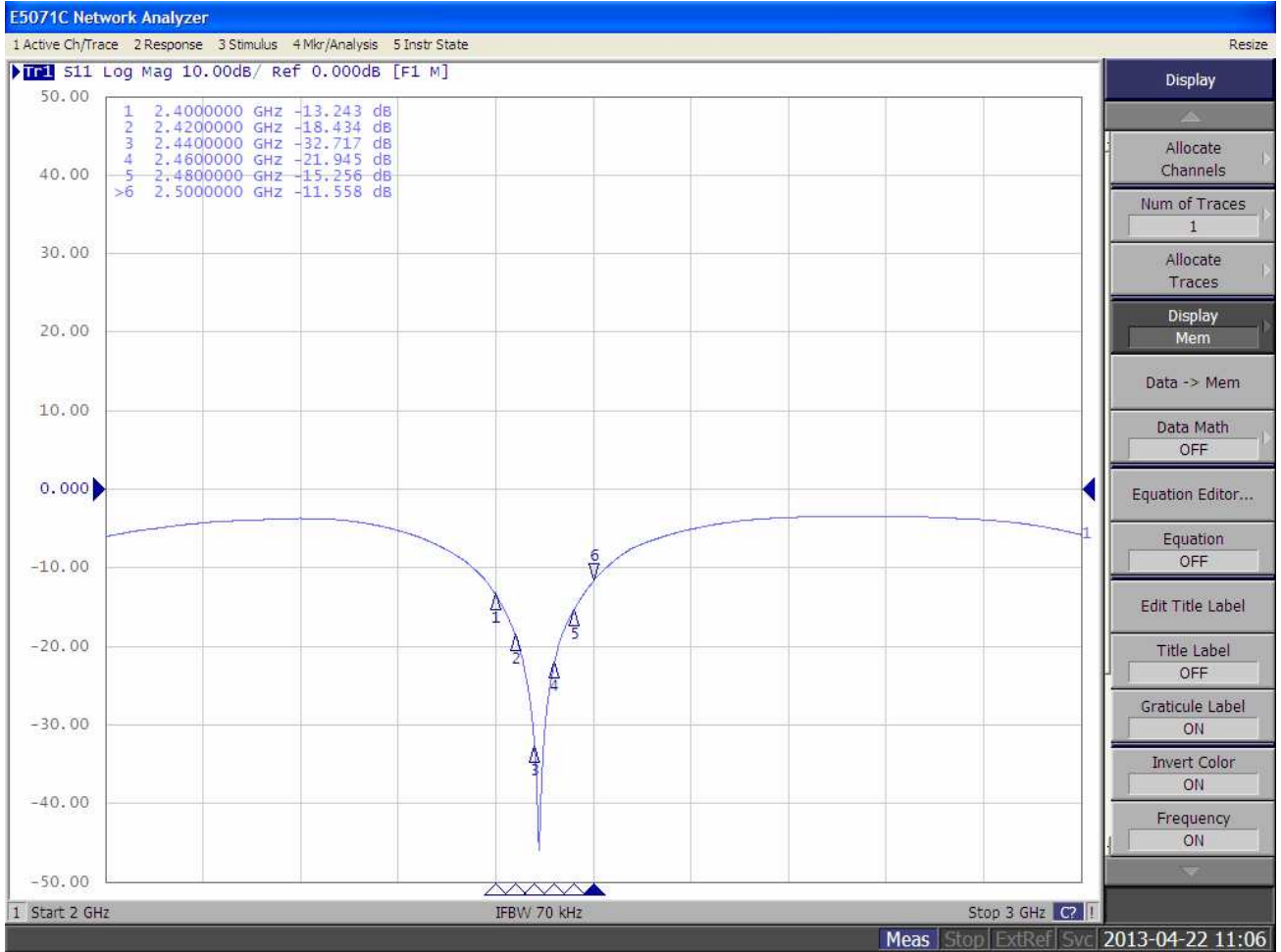
1.2 Mechanical Properties

Parameter	Description
Antenna Cable Total Length	100±3
Operating Temperature Range	-30°C~+70°C
Storage Temperature Range	-35°C~+75°C
PCB size	45 mm x 10 mm x 0.7mm
Cable size	1.13mm x 100mm
Connector	U.FL (I-PEX)

2. Appearance



3. FREQUENCY

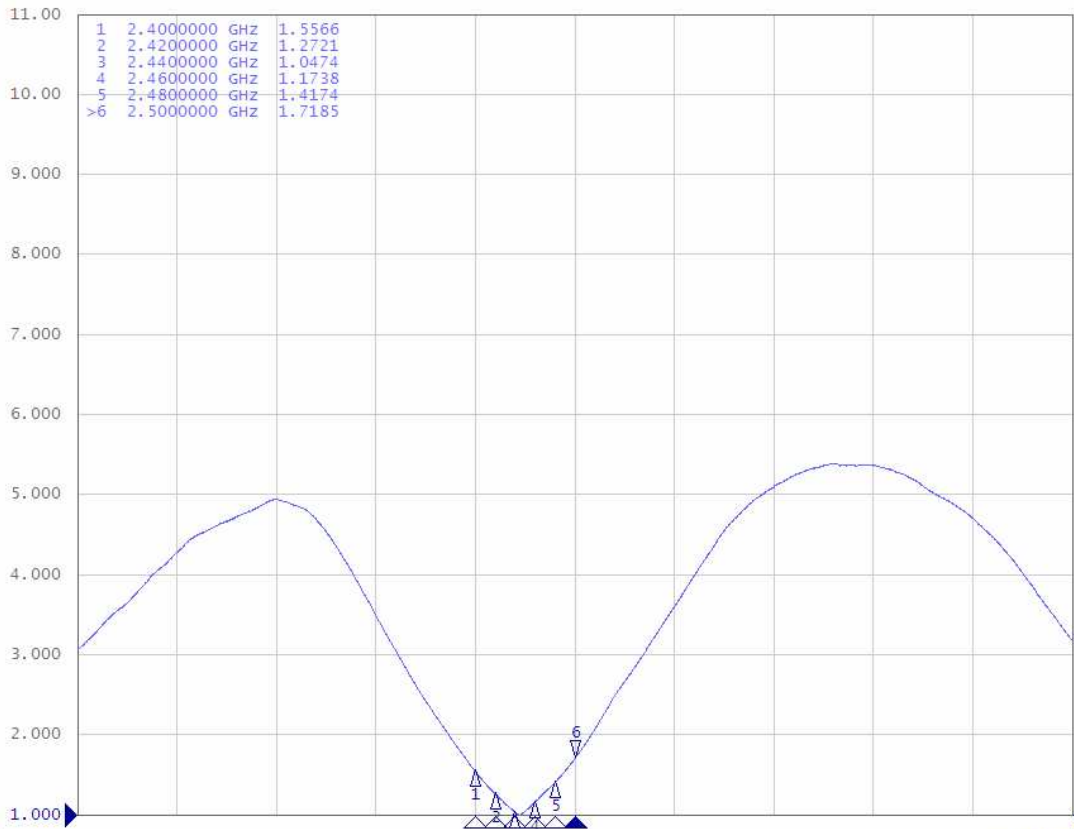


E5071C Network Analyzer

1 Active Ch/Trace 2 Response 3 Stimulus 4 Mkr/Analysis 5 Instr State

Resize

Tr1 S11 Swr 1.000/ Ref 1.000 [F1 M]



- Format
- SWR
- Log Mag
- Phase
- Group Delay
- Smith
- Polar
- Lin Mag
- SWR
- Real
- Imaginary
- Expand Phase
- Positive Phase
- Return

Start 2 GHz

IFBW 70 kHz

Stop 3 GHz

Meas Stop ExtRef Svc

2013-04-22 11:07

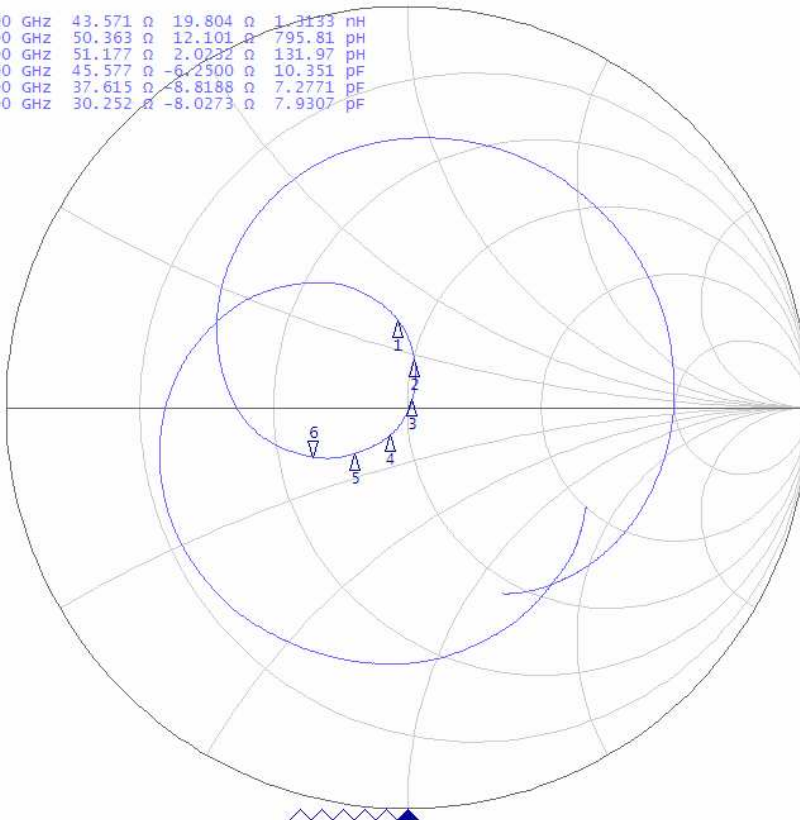
E5071C Network Analyzer

1 Active Ch/Trace 2 Response 3 Stimulus 4 Mkr/Analysis 5 Instr State

Resize

Tr1 s11 smith (R+jX) Scale 1.000U [F1 M]

Line	Freq (GHz)	Real (Ω)	Imag (Ω)	Real (nH)	Imag (pF)
1	2.4000000	43.571	19.804	1.3133	nH
2	2.4200000	50.363	12.101	795.81	pF
3	2.4400000	51.177	2.0232	131.97	pF
4	2.4600000	45.577	-6.2500	10.351	pF
5	2.4800000	37.615	-8.8188	7.2771	pF
>6	2.5000000	30.252	-8.0273	7.9307	pF



1 Start 2 GHz

IFBW 70 kHz

Stop 3 GHz

Meas Stop ExtRef Svc 2013-04-22 11:07

Format

Smith (R+jX)

Log Mag

Phase

Group Delay

Smith

R + jX

Polar

Lin Mag

SWR

Real

Imaginary

Expand Phase

Positive Phase

Return