

# ***PROFESSOR TECHNOLOGY CO.,LTD.***

---

## **CP68Q-2M-FAKRA(SMB) D tpye (824~960/1710~1990MHz) INTRODUCTION**

### **1. GENERAL DESCRIPTION**

<b>Model No</b>	<b>Products P/N</b>
CP68Q-2M-FAKRA(SMB) D type	AG-CP68-FAKRA

Below is a table summarizing the GSM,EGSM,DCS,PCS antenna design specification.

### **1.1 Electrical Properties**

<b>Parameter</b>	<b>Description</b>
Frequency Band	GSM850: 824~896MHz EGSM900: 880~960MHz DCS1800: 1710~1886MHz PCS1900: 1850~1990MHz
Nominal Impedance	50 ohm
Polarization	Vertical
V.S.W.R	2.0:1
Antenna Gain	2~2.5dbi
Note: Gain includes the cable loss	

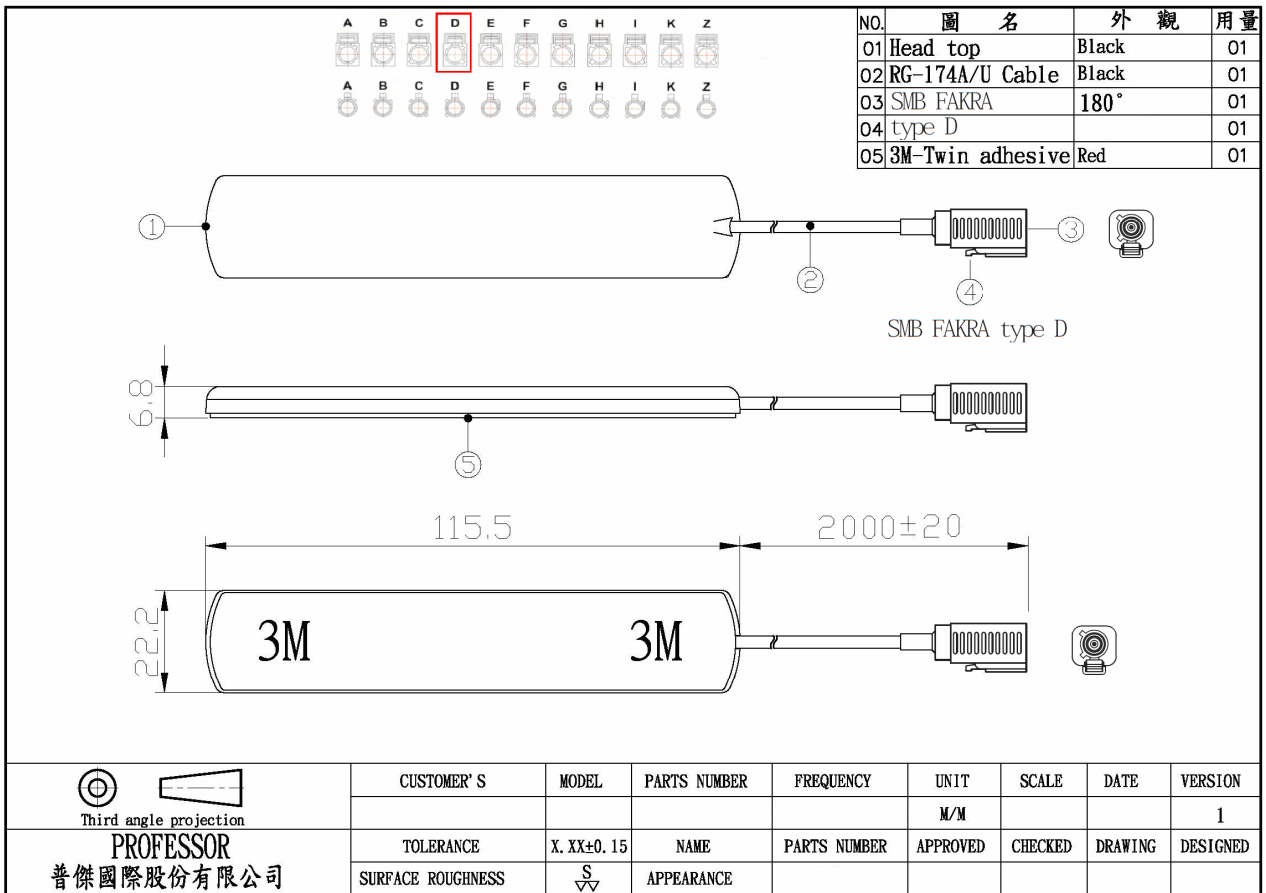
### **1.2 Mechanical Properties**

<b>Parameter</b>	<b>Description</b>
Antenna Material	ABS
Connector Type	FAKRA(SMB)D type
Antenna Dimensions	115 mm $\pm$ 5
Antenna Cable Total Length	2000mm $\pm$ 20
Antenna Color	Black
Operating Temperature Range	-35°C~+70°C
Storage Temperature Range	-40°C~+75°C

---

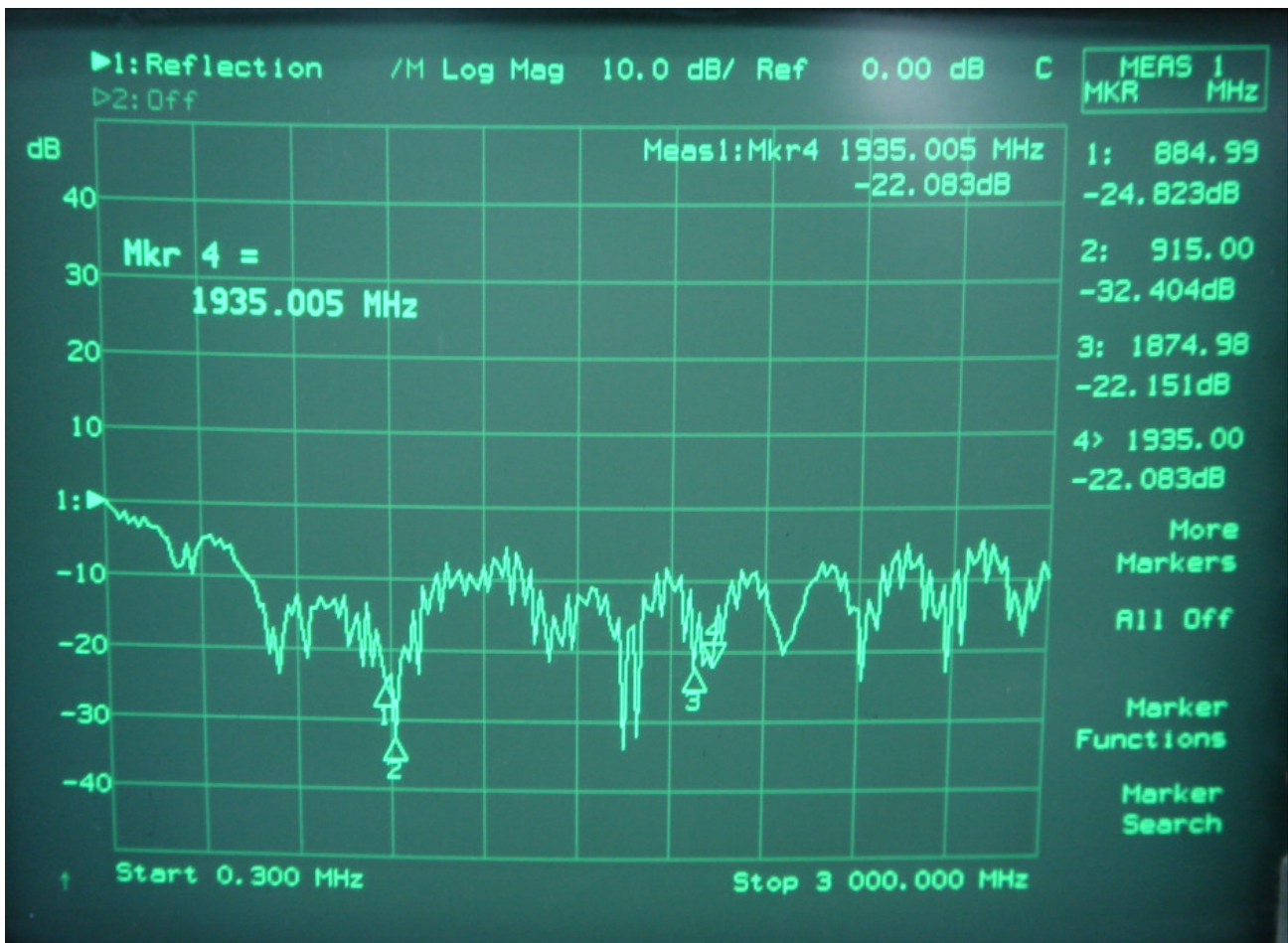
# PROFESSOR TECHNOLOGY CO.,LTD.

## 2. Appearance

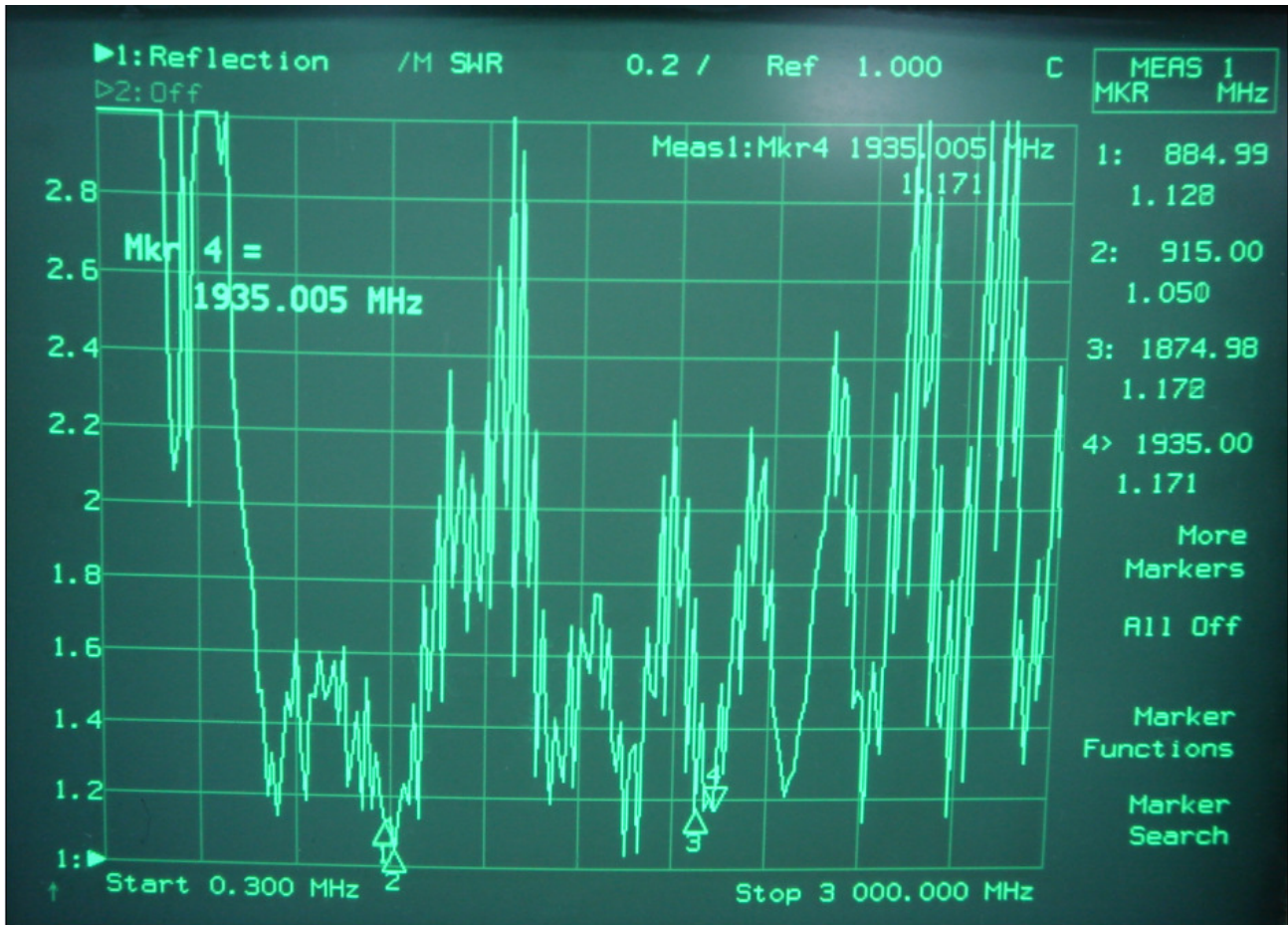


# PROFESSOR TECHNOLOGY CO.,LTD.

## 3. FREQUENCY



# PROFESSOR TECHNOLOGY CO.,LTD.





# PROFESSOR TECHNOLOGY CO.,LTD.

