

PROFESSOR TECHNOLOGY CO.,LTD.

CP68-LTE(4G)-2.5M-MMCX R/A (690/960/1710/2170/2400/2700MHZ)

INTRODUCTION

1. GENERAL DESCRIPTION

Model No	Products P/N
CP68-LTE(4G)-2.5M-MMCX R/A	AG-08-4G-M

Below is a table summarizing the LTE (4G) antenna design specification.

1.1 Electrical Properties

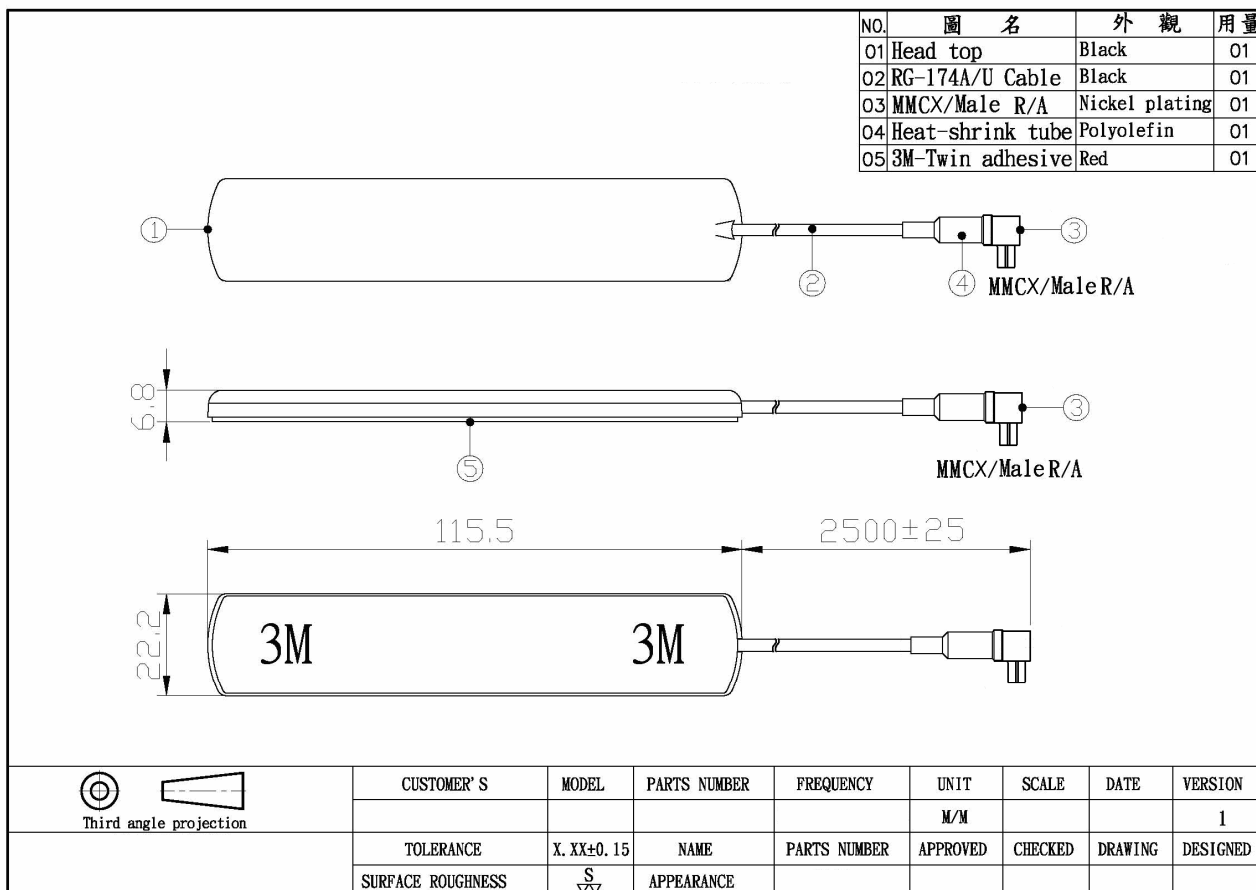
Parameter	Description
Frequency Band	690/960/1710/2170/2400/2700MHZ
Nominal Impedance	50 ohm
Polarization	Vertical
V.S.W.R	2.0:1
Antenna Gain	2db~2.5db
Note: Gain includes the cable loss	

1.2 Mechanical Properties

Parameter	Description
Antenna Material	ABS
Connector Type	MMCX / Male R/A (90°)
Antenna Dimensions	115 mm ± 5
Antenna Cable Total Length	2500mm ± 25
Antenna Color	Black
Operating Temperature Range	-35°C~+70°C
Storage Temperature Range	-40°C~+75°C

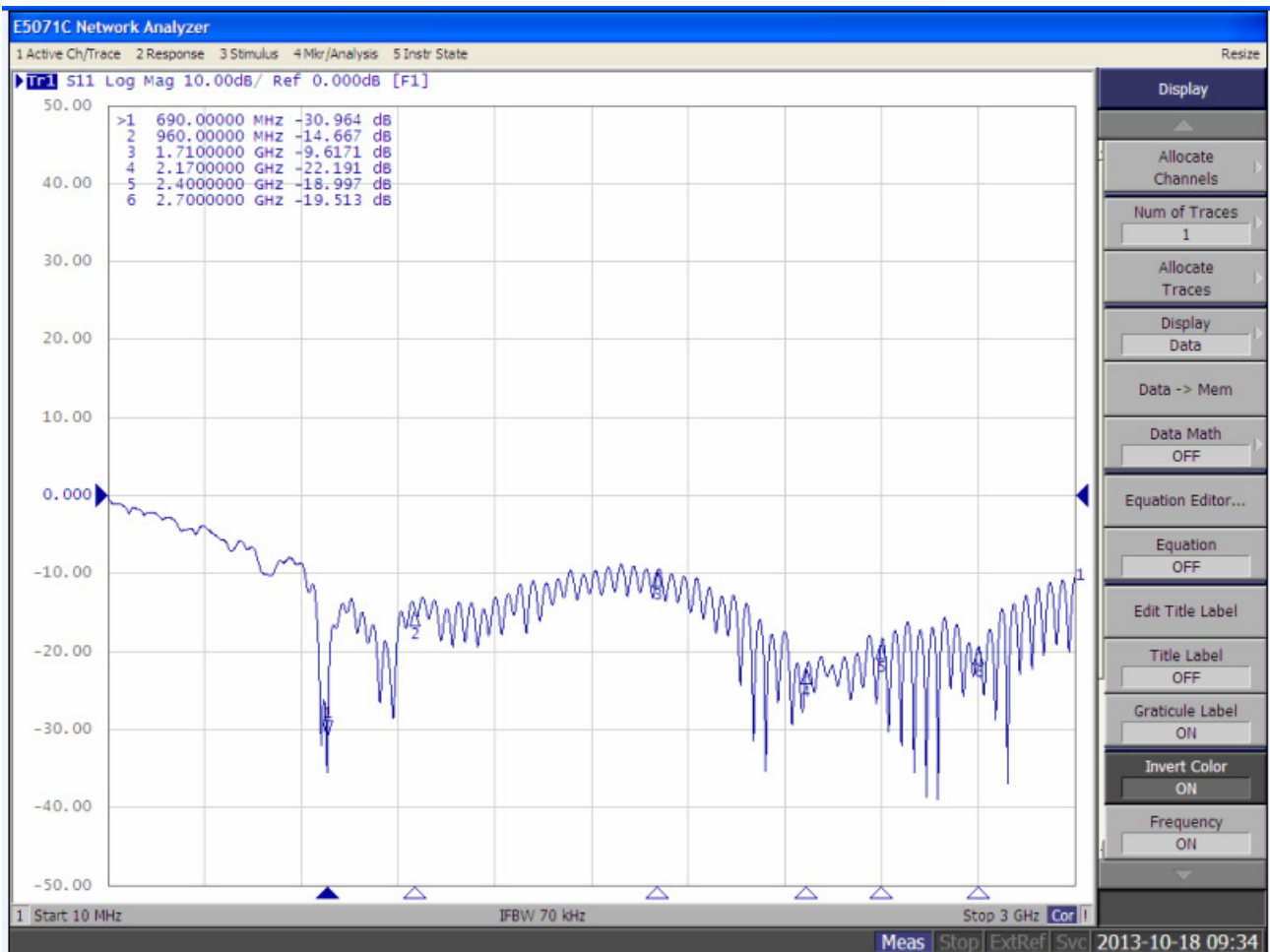
PROFESSOR TECHNOLOGY CO.,LTD.

2. Appearance

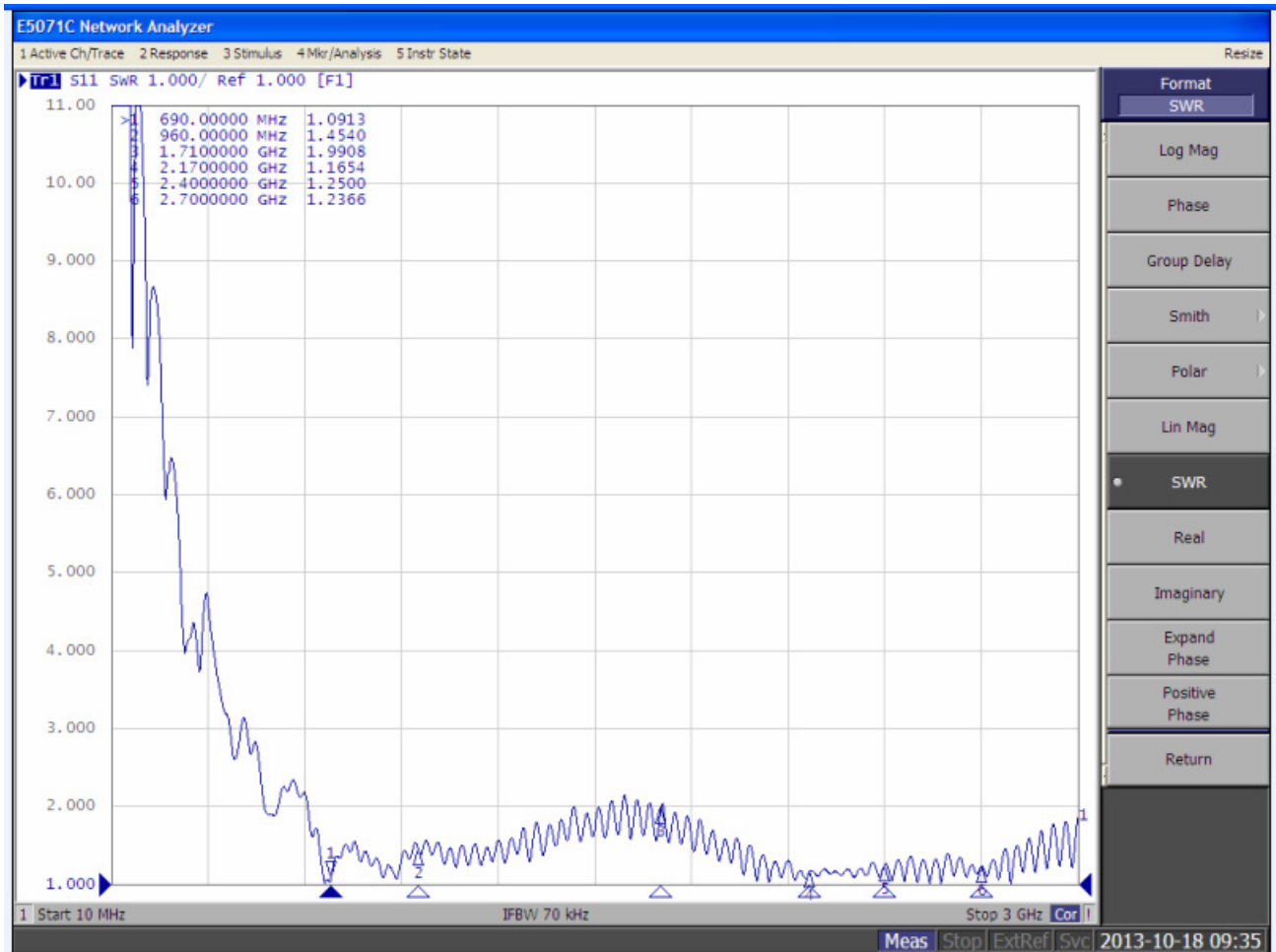


PROFESSOR TECHNOLOGY CO.,LTD.

3. FREQUENCY



PROFESSOR TECHNOLOGY CO.,LTD.



PROFESSOR TECHNOLOGY CO.,LTD.

