
INTRODUCTION

CP295-9db-1M-SMA/M-5bands (806~960/1695~2170 MHz)

1. GENERAL DESCRIPTION

Model No	PRODUCTS P/N
CP295-9db—RG58U-1M-SMA/M	CP295-9db

Below is a table summarizing the antenna design specification.

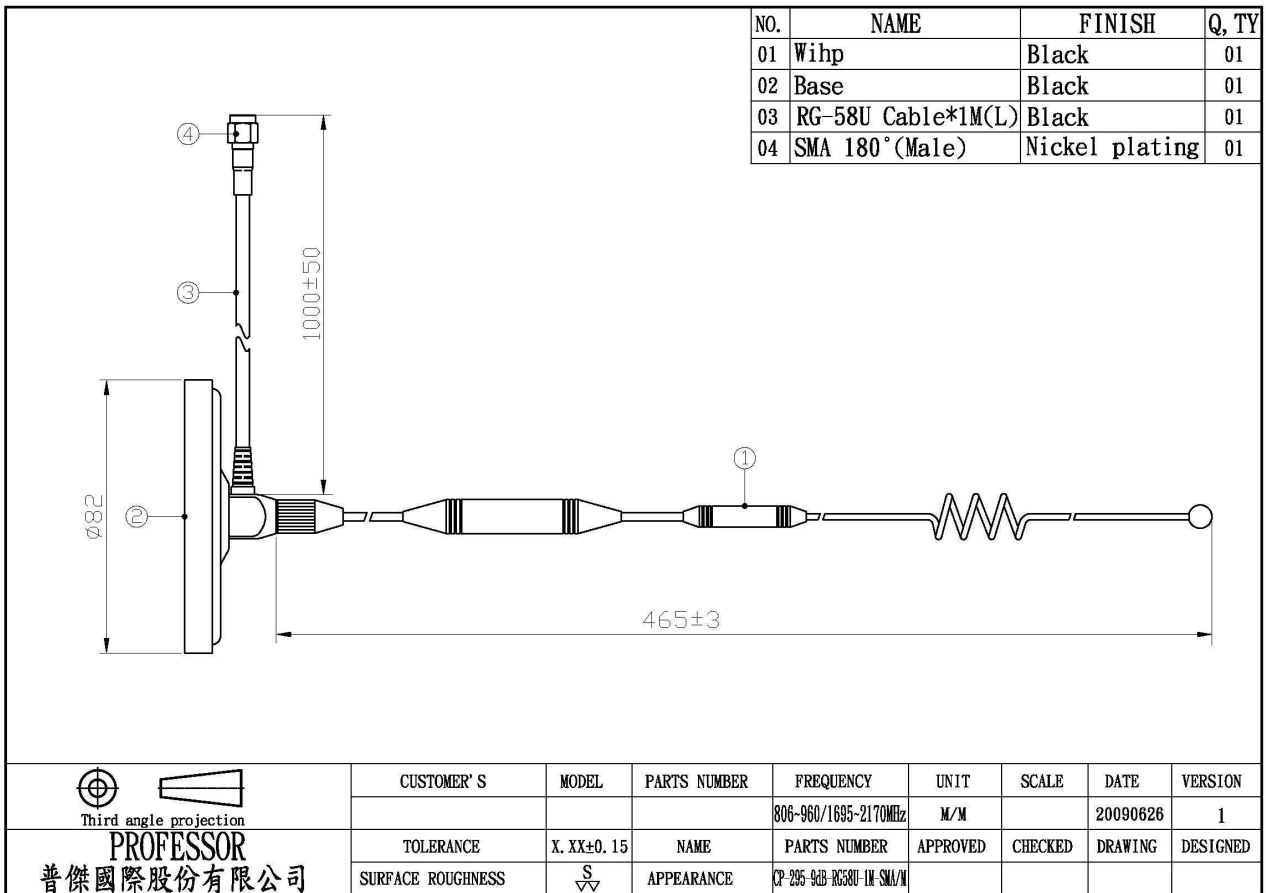
1.1 Electrical Properties

Parameter	Description
Frequency Band	806~960/1695~2170 MHz
Nominal Impedance	50 ohm
Polarization	Vertical
Return Loss	Please See Data-1
V.S.W.R	2.0 : 1
Note: Gain includes the cable loss	

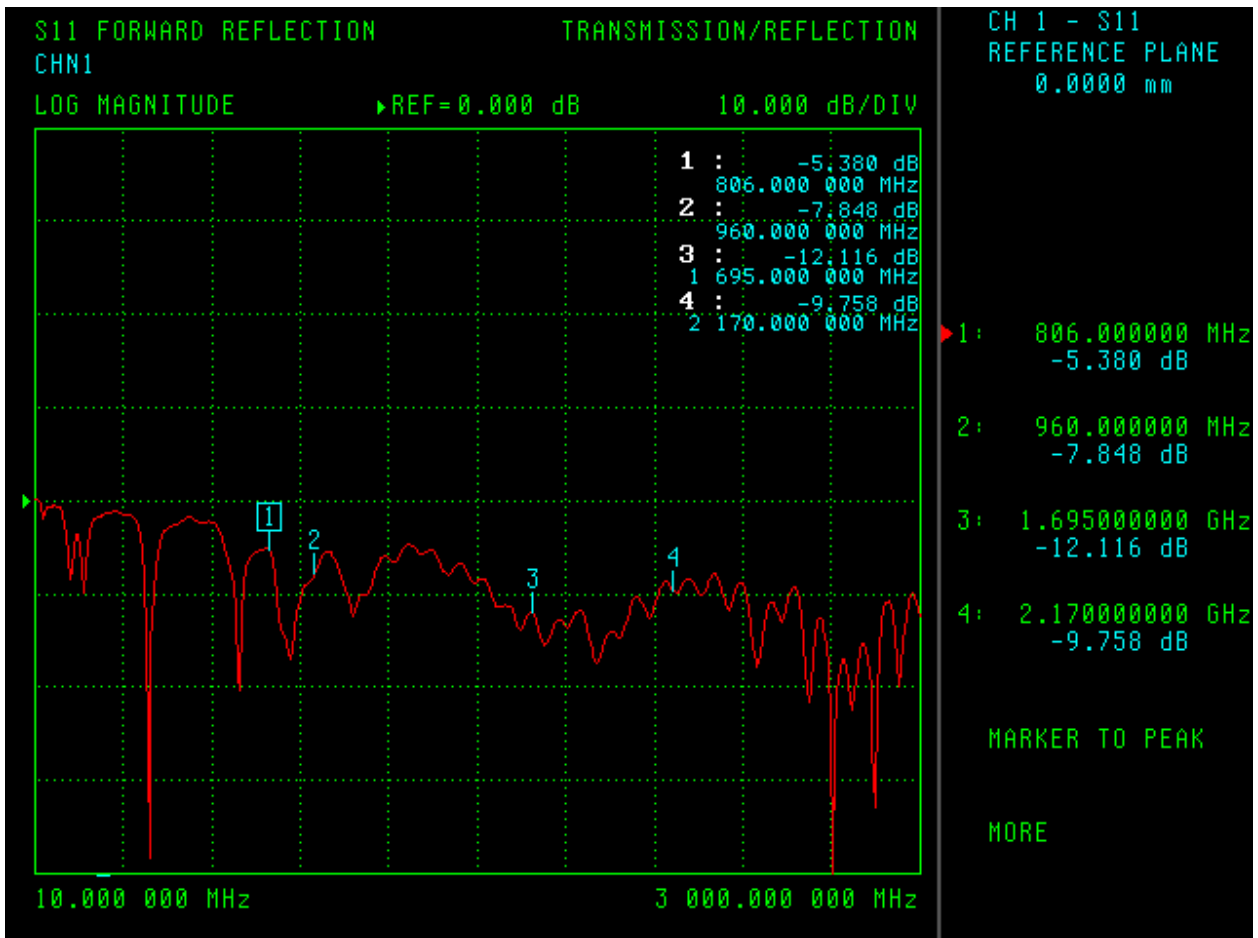
1.2 Mechanical Properties

Parameter	Description
Antenna Type	External Antenna
Touch Type	Screw Type
Connector Type	SMA 180° (Male)
Antenna Dimensions	465 mm ± 3
Antenna Cable Total Length	RG-58 U / 1000MM ±50
Antenna Color	Black
Operating Temperature Range	-30°C~+70°C
Storage Temperature Range	-40°C~+80°C

2. Appearance



3. Frequency



S11 FORWARD REFLECTION

TRANSMISSION/REFLECTION

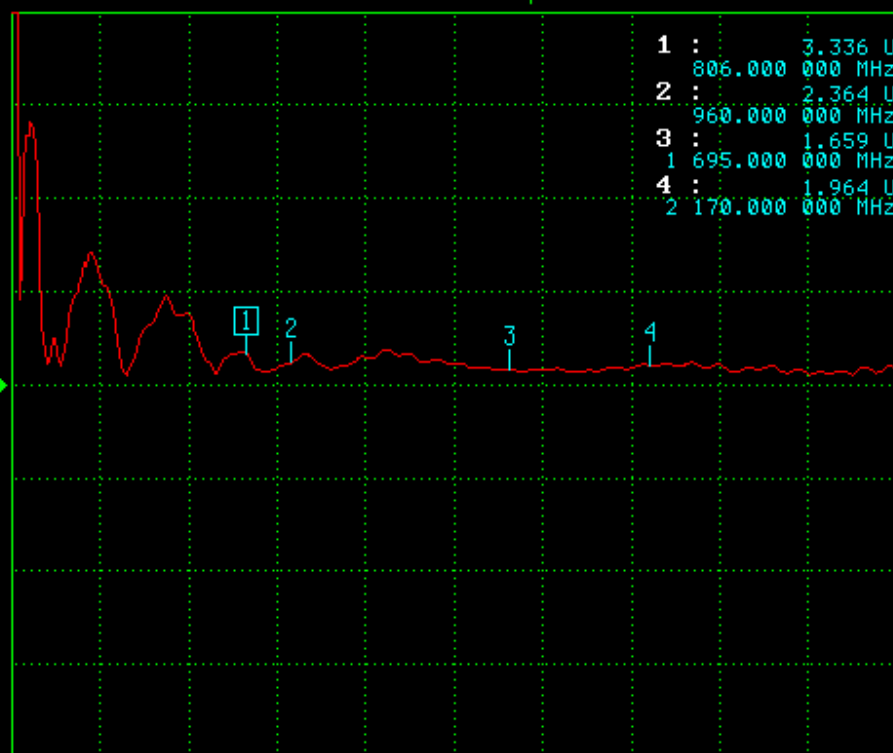
CHN1

SWR

REF=0.000 pU

10.000 U/DIV

CH 1 - S11
REFERENCE PLANE
0.0000 mm



1 :	3.336 U
806.000 000 MHz	
2 :	2.364 U
960.000 000 MHz	
3 :	1.659 U
1 695.000 000 MHz	
4 :	1.964 U
2 170.000 000 MHz	

1: 806.000000 MHz
3.336 U

2: 960.000000 MHz
2.364 U

3: 1.695000000 GHz
1.659 U

4: 2.170000000 GHz
1.964 U

MARKER TO PEAK

MORE

10.000 000 MHz

3 000.000 000 MHz

