

PROFESSOR TECHNOLOGY CO.,LTD.

INTRODUCTION OUTDOOR ANTENNA

1. GENERAL DESCRIPTION

P/N
CPR29-450MHz-1.5M- RG58U-SMA/male

Below is a table summarizing the Outdoor antenna design specification.

1.1 Electrical Properties

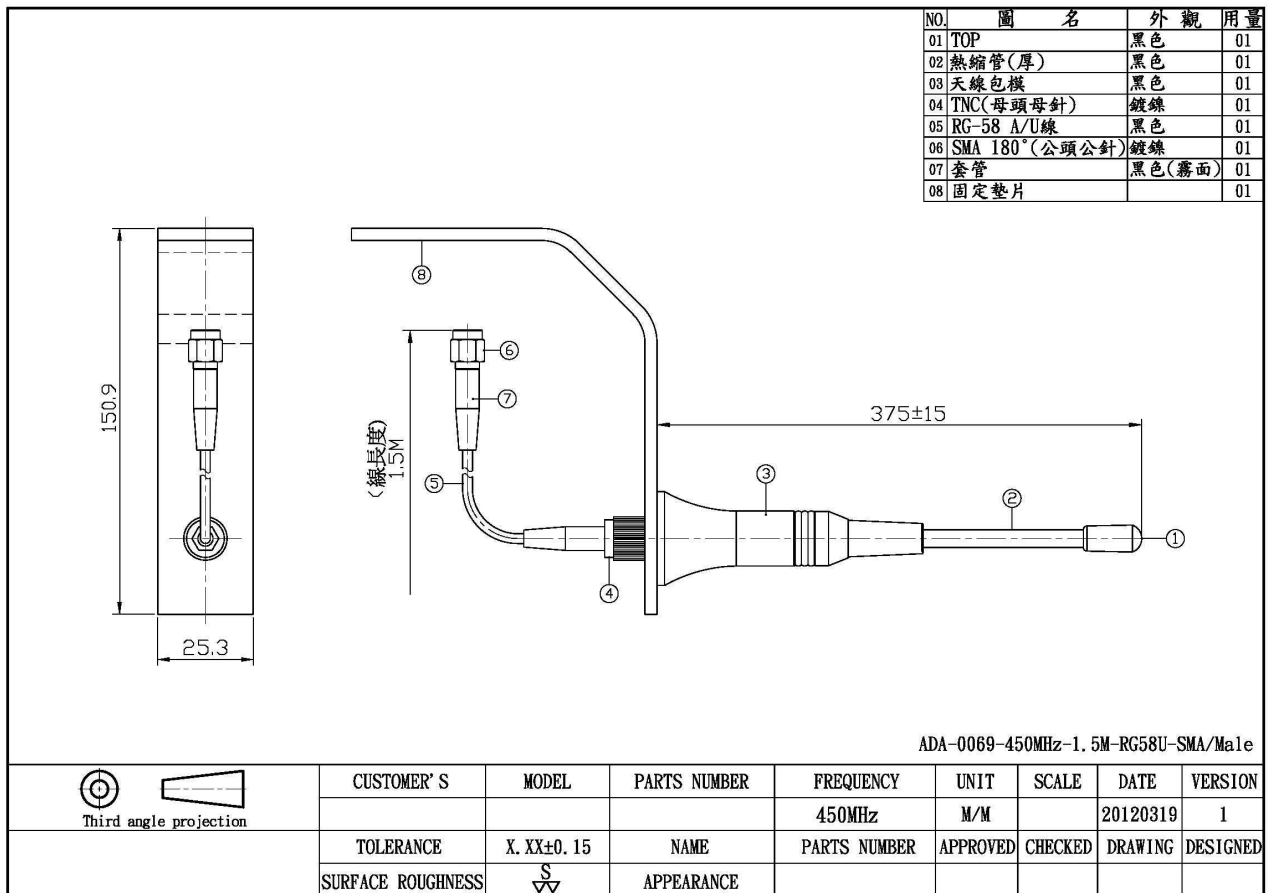
Parameter	Description
Frequency Band	450 MHz
Nominal Impedance	50 ohm
Polarization	Vertical
V.S.W.R	2.0:1

1.2 Mechanical Properties

Parameter	Description
Antenna Type	External Antenna
Antenna Material	PVC,ABS
Touch Type	Screw Type
Connector Type	SMA (Male) TNC (Female)
Antenna Cable Total Length	RG-58A/U 1500mm ± 20
Antenna Dimensions	375 mm ± 15
Antenna Color	Black
Operating Temperature Range	-20°C~+60°C
Storage Temperature Range	-30°C~+70°C

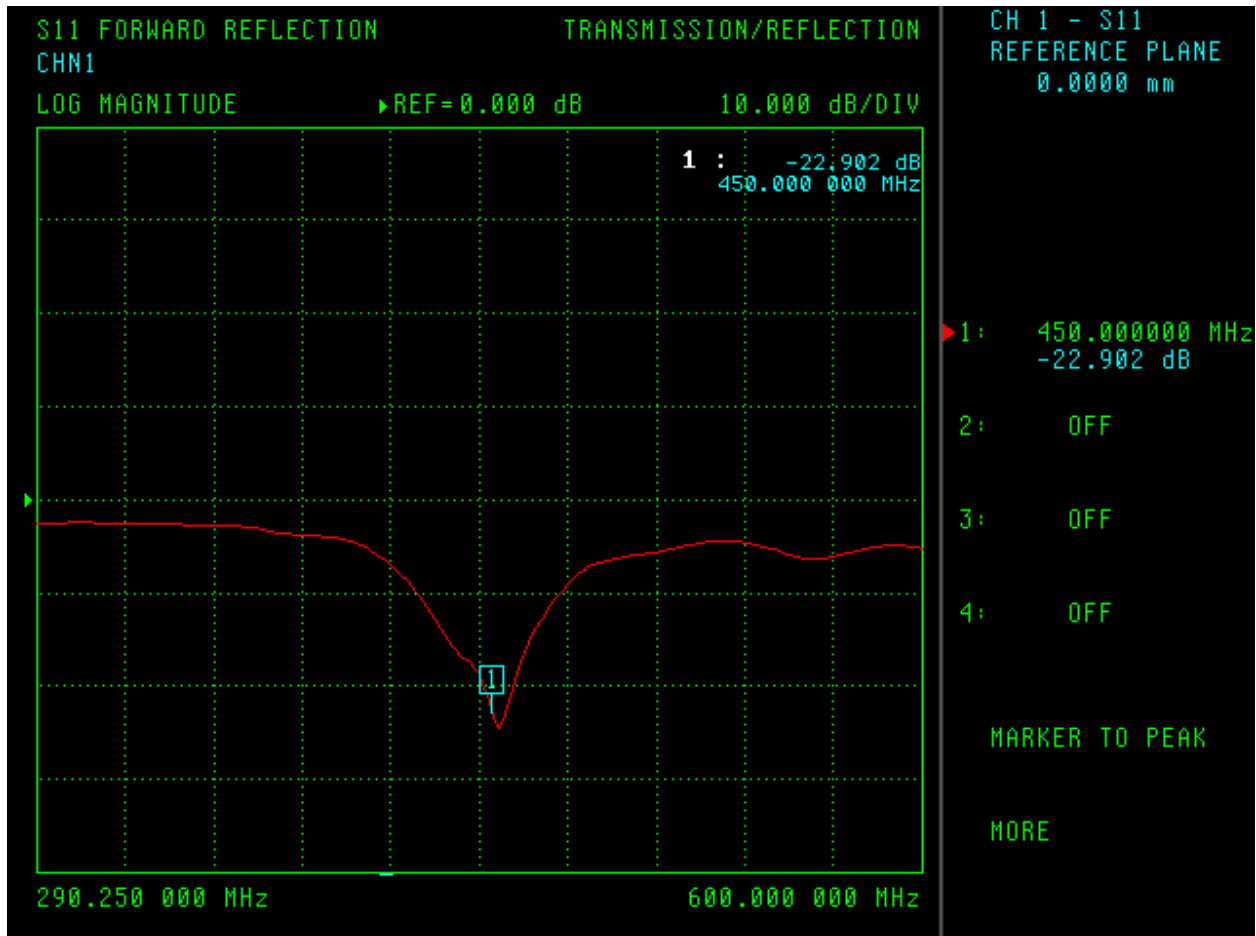
PROFESSOR TECHNOLOGY CO.,LTD.

2. Appearance

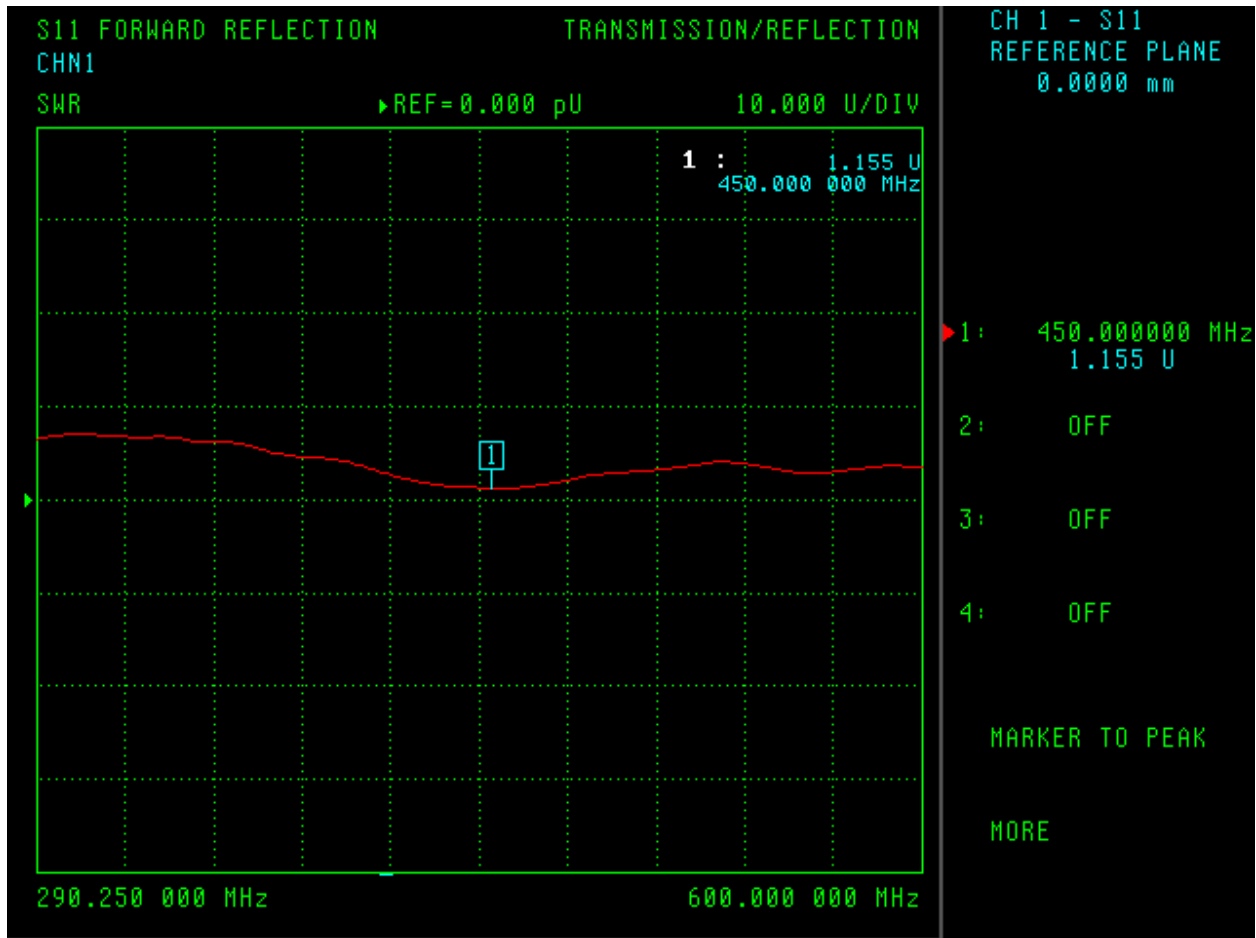


PROFESSOR TECHNOLOGY CO.,LTD.

3. Return Loss, V.S.W.R. and Smith Chart



PROFESSOR TECHNOLOGY CO.,LTD.



PROFESSOR TECHNOLOGY CO.,LTD.

