

---

---

**INTRODUCTION**  
**Multiband External Antenna**  
**CP04F-2.5M-SMA/M**  
**Roof screw mount**

**1. GENERAL DESCRIPTION**

Model No	P/N
CP04F-2.5M-SMA/M-5 Bands	CP04-2.5M-SMA/M

Below is a table summarizing the antenna design specification.

**1.1 Electrical Properties**

Parameter	Description
Frequency Band	850/900/1800/1900/2170 MHz
Nominal Impedance	50 ohm
Polarization	Vertical
Electrical Wave	$\frac{1}{4} \lambda$ Dipole
V.S.W.R	3.0:1
Antenna Average Gain	1~1.5 dBi
Note: Gain includes the cable loss	

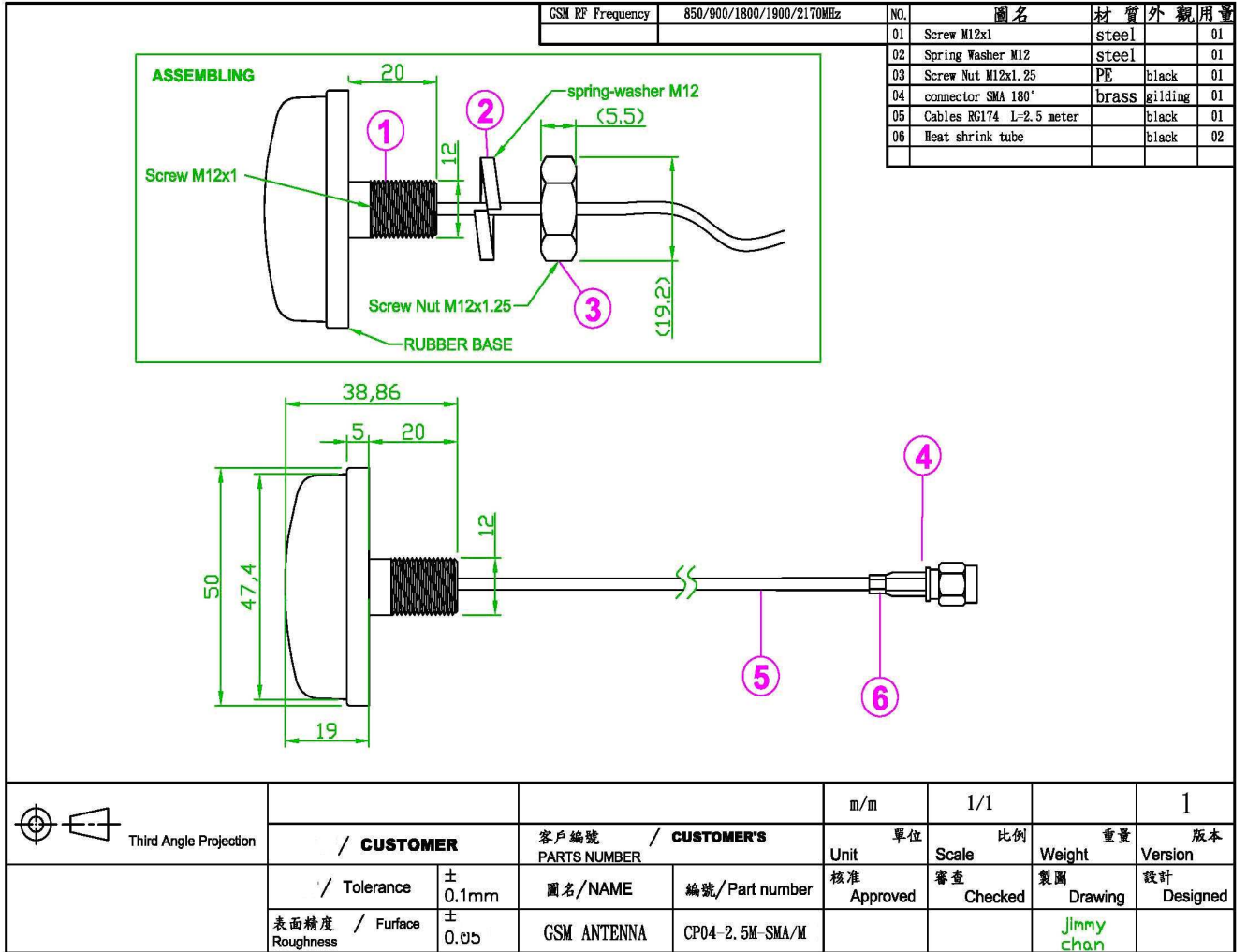
**1.2 Mechanical Properties**

Parameter	Description
Antenna Type	External Antenna
Antenna Material	P.P
Touch Type	Screw Type
Connector Type	SMA 180° (Male)
Antenna Dimensions	2500 mm $\pm$ 50
Antenna Color	Black
Operating Temperature Range	-30°C~+70°C
Storage Temperature Range	-40°C~+80°C

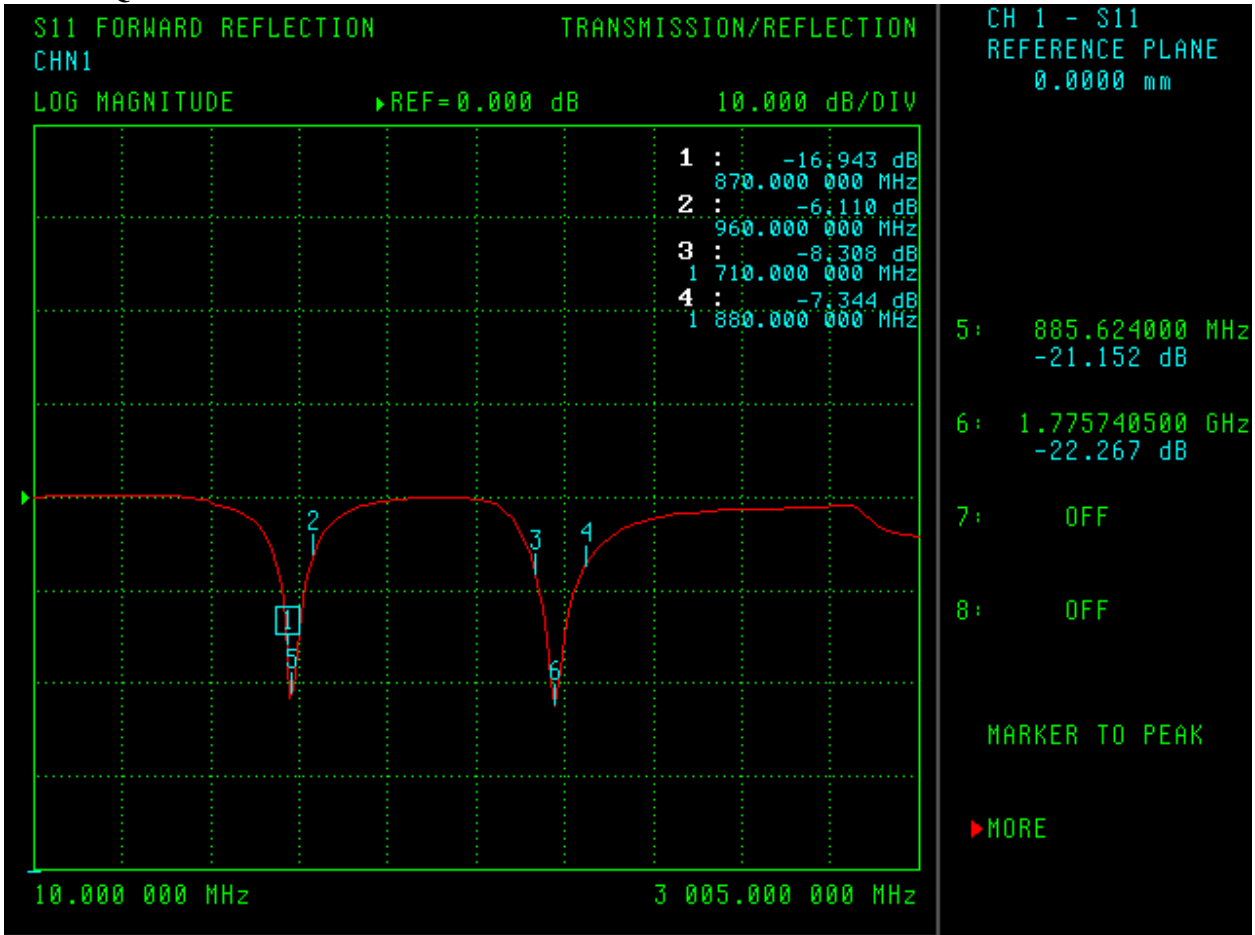
---

---

## 2.Appearance



### 3. FREQUENCY



S11 FORWARD REFLECTION

TRANSMISSION/REFLECTION

CHN1

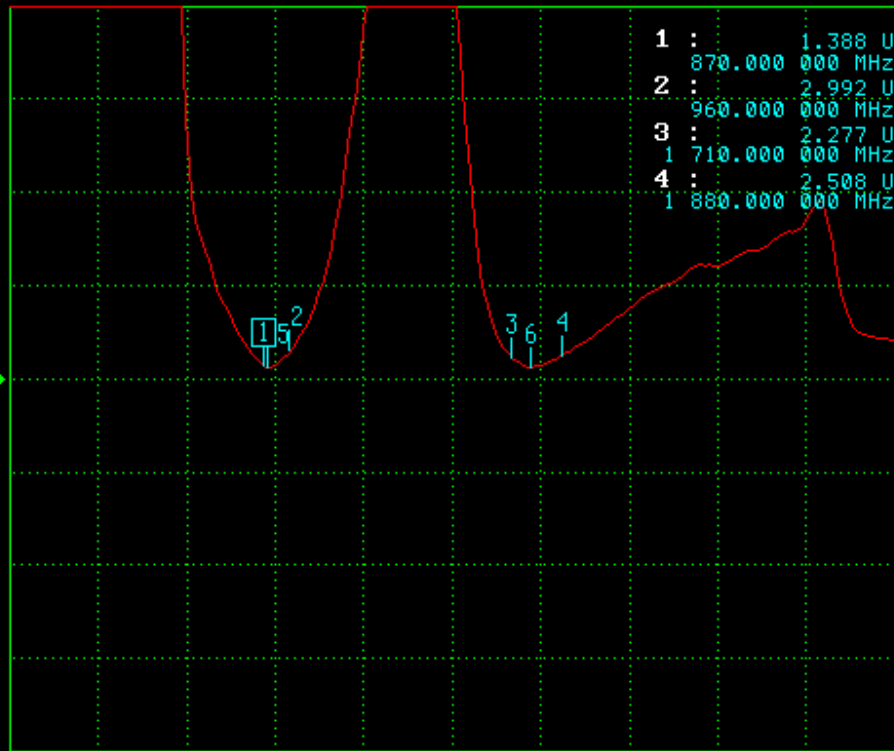
CH 1 - S11  
REFERENCE PLANE

0.0000 mm

SWR

REF=0.000 pU

10.000 U/DIV



10.000 000 MHz

3 005.000 000 MHz

5: 885.624000 MHz  
1.192 U

6: 1.775740500 GHz  
1.168 U

7: OFF

8: OFF

MARKER TO PEAK

▶ MORE

