

PROFESSOR TECHNOLOGY CO.,LTD.

INTRODUCTION OBDII Power Cable

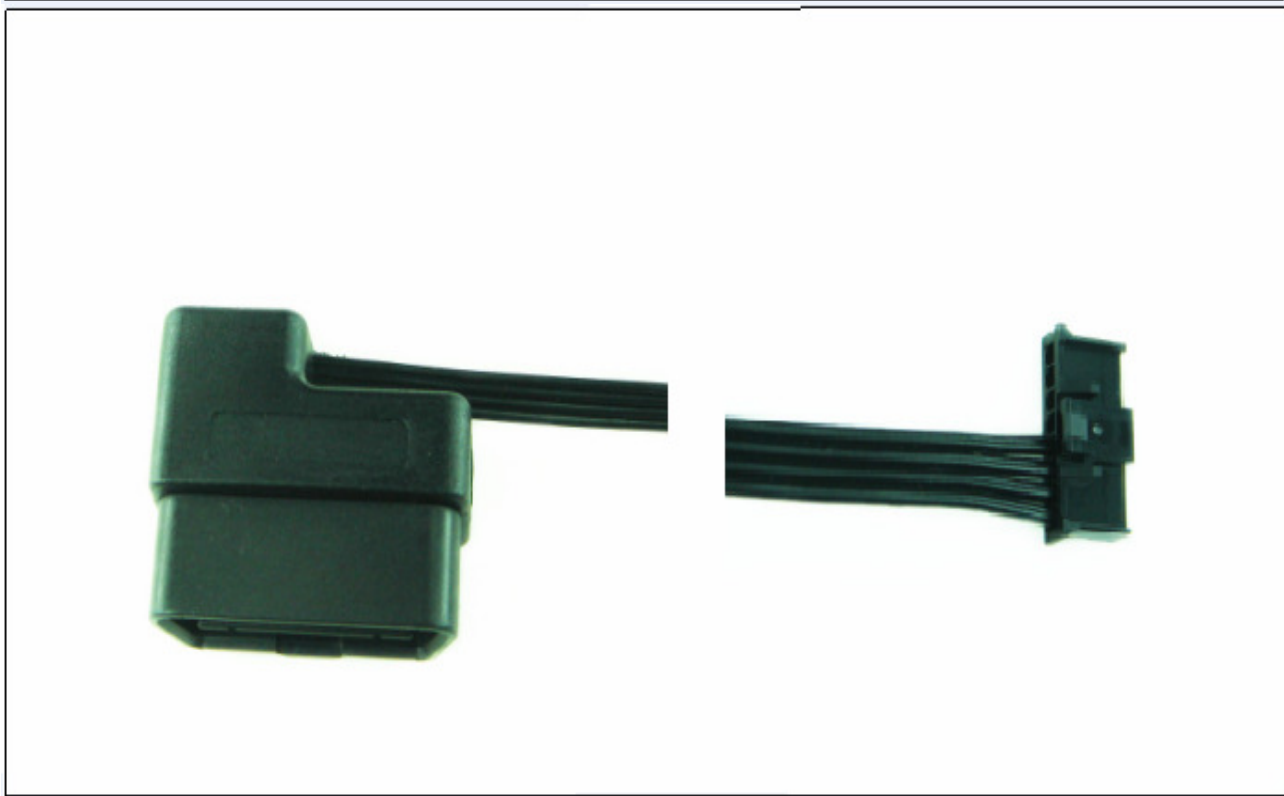
Model No	Products P/N
OBDII-52cm-UL1007-2070SX	OBDII-052

Below is a table summarizing the OBDII Power cable design specification.

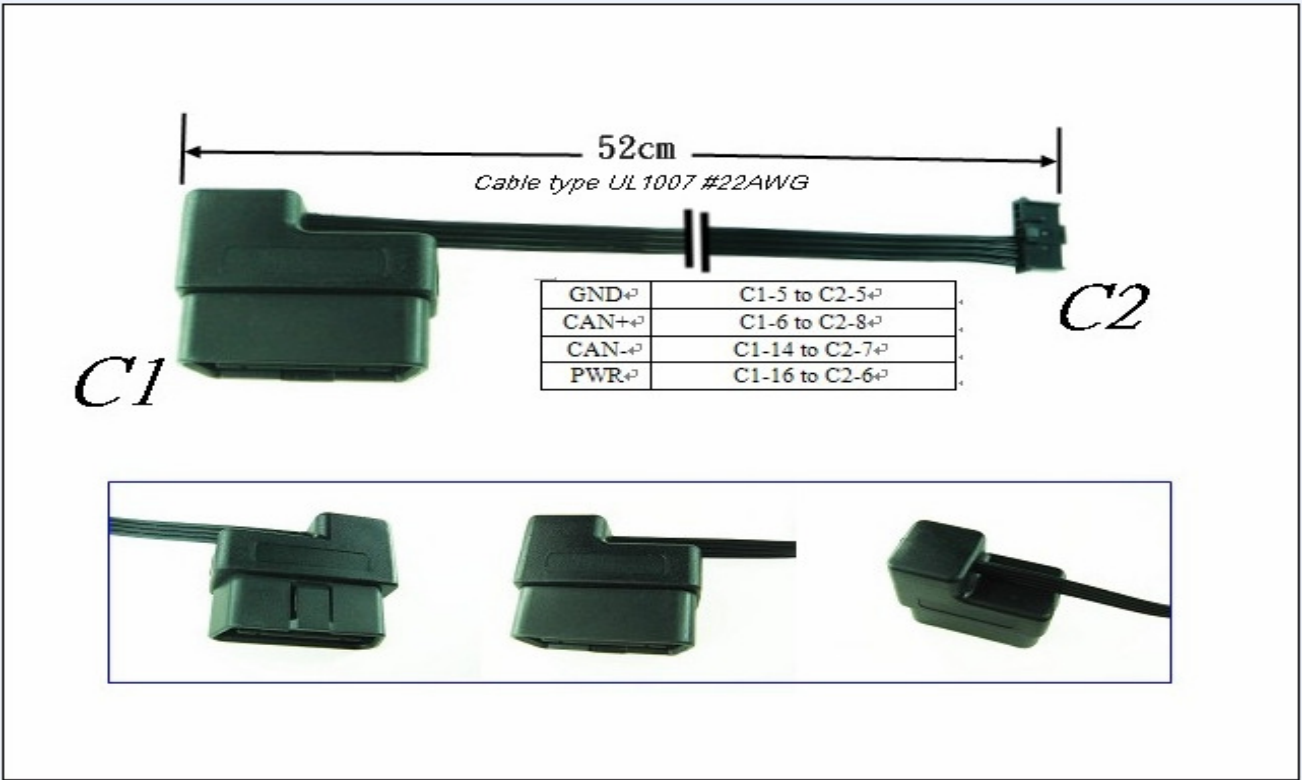
Mechanical Properties

Parameter	Description
OBD II Connector Type	OBDII-16PIN (Male)
OBDII Color	Black
Power Connector Type	2070SXX00-X
Cable Type	UL1007 Hook-up Wire UL Subject 758 UL FILE NO:E108485 CSA Standard CSA FILE NO:LL84687
Cable Product Description	**Tinned,annealed,standed or Solid copper Coduc 32-16AWG **Lead Free PVC Insulation. **Reted temoerature:80'C, Rated Voltage:300Volts **Passed UL V W-1&CSA FT 1 vertical flame test.
Cable Total Length	520mm \pm 30
Cable Color	Black
Operating Temperature Range	-30°C~+60°C
Storage Temperature Range	-35°C~+70°C

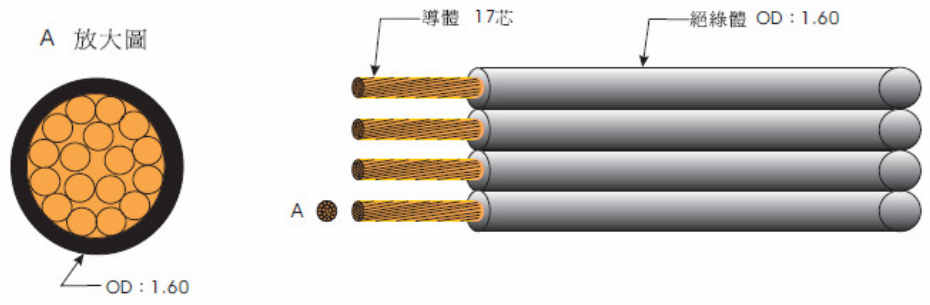
PROFESSOR TECHNOLOGY CO.,LTD.



PROFESSOR TECHNOLOGY CO.,LTD.



RoHS



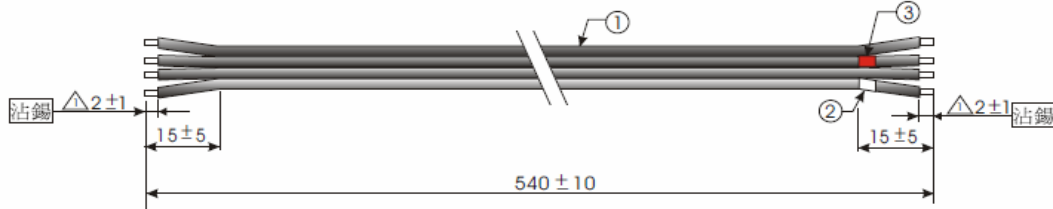
A	COLOR	B	C
---	-------	---	---

REV	DESCRIPTION	BY	DATE	APP
-----	-------------	----	------	-----

1	Wire	規格UL1007-22AWG (不印字)	張	4
No.	MATERIAL	DESCRIPTION	COLOR	QTY
DESIGNER	DATE			
CHKD#	DATE			
APP#	DATE	TITLE		
CUSTOMER COPY		REVISION	UNIT mm	DWG. No. SJ20130722001
				SHEET 1/1 REV. 1

PROFESSOR TECHNOLOGY CO.,LTD.

RoHS



3	TUBE	透保Φ1.5 L=5mm or Compatible	紅	1
2	TUBE	透保Φ1.5 L=5mm or Compatible	白	1
1	Wire	透保UL1007-22AWG(本型物)	黑	4

No.	MATERIAL	DESCRIPTION	COLOR	QTY
DESIGNER	DES			
CHK'D	DES			
APP'D	DES			

A	COLOR	B	C
---	-------	---	---

△	客戶訂製 5mm 長度 3mm	Terry	2013/03/19	Terry	CUSTOMER COPY	REVISION	UNIT mm	DWG. No. SJ20130722001	SHEET 1/1	REV. 1
---	-----------------	-------	------------	-------	---------------	----------	---------	------------------------	-----------	--------



瑞興電線電纜製品廠
Rei Hsing Electric Wire And Cable Co., Ltd

UL 1007 Hook-up Wire 80°C 300V

UL Subject 758 UL FILE NO: E108485

CSA Standard CSA FILE NO:LL84687

說明：

- 導體使用單條或絞線 32-16AWG 裸銅或鍍錫銅。
- 使用無毒 PVC 絕緣。
- 額定溫度：80°C，額定電壓：300Volts。
- 可通過 UL VW-1 及 CSA FT1，垂直型耐燃試驗。

Product Description

- Tinned ,annealed ,stranded or Solid copper Conductor, 32-16AWG.
- Lead Free PVC Insulation.
- Rated temperature:80°C ;Rated voltage:300Volts.
- Passed UL VW-1&CSA FT1 vertical flame test.

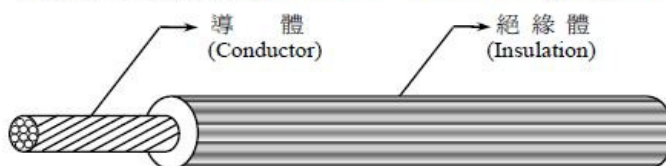
應用：

- 一般電子、電器設備內部配線。

Applications

- For internal wiring of electronic and electrical Equipment

構造及電氣性能(Structure & electric properties)

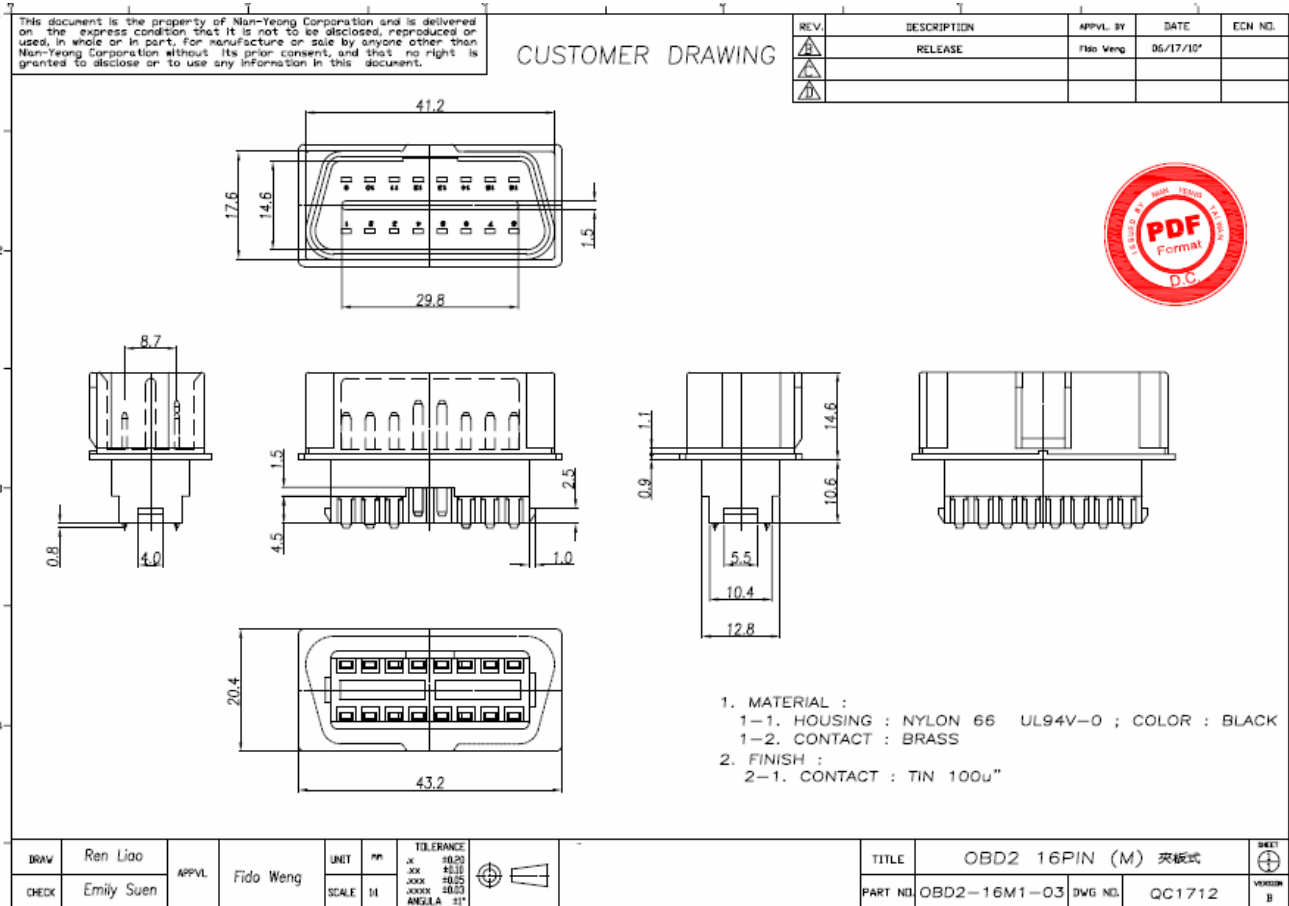


PROFESSOR TECHNOLOGY CO.,LTD.

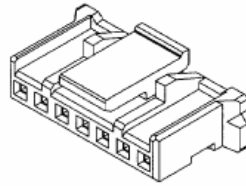
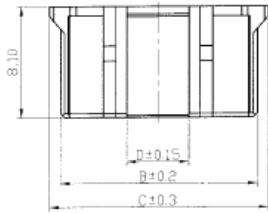
UL 1007 CSA TR-64	額定 Range		導體 Conductor		絕緣體 Insulation		公差值 Tolerance mm	最大導體阻抗 Maximum Conductor Resistance Ω /km	絕緣耐電壓 VAC/min Insulation Potential Strength
	溫度 Temp $^{\circ}$ C	電壓 Voltage V	線號 AWG	構成 NO./mm	厚度 Thickness mm	外徑 O.D mm			
Stranded 多芯線 先絞後鍍 Top-Coated (ATC)	UL 80 $^{\circ}$ C CSA 90 $^{\circ}$ C	300V	32	7/0.080	0.38	1.00	± 0.10	703.0	2000
			30	7/0.100	0.38	1.10	± 0.10	397.0	
			28	7/0.127	0.38	1.20	± 0.10	248.0	
			26	7/0.160	0.38	1.30	± 0.10	152.0	
			24	11/0.160	0.38	1.45	± 0.10	88.60	
			22	17/0.160	0.38	1.60	± 0.10	62.50	
			20	21/0.180	0.38	1.85	± 0.10	39.50	
			18	34/0.180	0.38	2.10	± 0.10	24.40	
			16	26/0.254	0.38	2.40	± 0.10	15.60	
			30	7/0.100	0.38	1.10	± 0.10	397.0	
			28	7/0.127	0.38	1.20	± 0.10	248.0	
			26	7/0.160	0.38	1.30	± 0.10	152.0	
			24	7/0.200	0.38	1.45	± 0.10	88.60	
			22	7/0.254	0.38	1.60	± 0.10	62.50	
Solid(TA) 單芯線	20	7/0.320	0.38	1.85	± 0.10	39.50			
	28	1/0.320	0.38	1.15	± 0.10	232.1			
	26	1/0.404	0.38	1.25	± 0.10	155.0			
	24	1/0.511	0.38	1.40	± 0.10	92.40			
	22	1/0.643	0.38	1.55	± 0.10	60.10			
			20	1/0.813	0.38	1.70	± 0.10	37.00	
			18	1/1.020	0.38	1.96	± 0.10	23.60	

檢 驗 項 目	檢 驗 規 格	檢 驗 結 果
1. 外 觀 檢 查	目視 CNS689	PASS
2. 構 造 檢 查	導體結構：17x 0.154mm 絕緣厚度：0.38mm	導體結構：0.154-0.157 mm 絕緣厚度：0.42-0.52 mm
3. 耐 電 壓 試 驗	AC 2000 V/1min.	PASS
4. 常 溫 絕 緣 電 阻 試 驗	20 $^{\circ}$ C 5 M Ω /Km 以上	220 M Ω /Km
5. 塑 膠 抗 拉 強 度 試 驗	絕緣體：1500Psi	絕緣體：2239Psi
6. 塑 膠 伸 長 率 試 驗	絕緣體：100%	絕緣體：225 %
7. 塑 膠 老 化 後 抗 拉 強 度 試 驗	絕緣體：老化前值之 70%	絕緣體：86 %
8. 塑 膠 老 化 後 伸 長 率 試 驗	絕緣體：老化前值之 65%	絕緣體：75 %
9. 纏 繞 加 熱 試 驗	表面不產生瑕疵、裂紋	PASS
10. 低 溫 纏 繞 試 驗	表面不產生瑕疵、裂紋	PASS
11. 塑 膠 耐 燃 性 試 驗	15 秒鐘內自動熄滅	2 秒
12. 包 裝 檢 查	標示、長度、重量、外觀	PASS
13. 火 花 試 驗	5 KV/0.15 秒	PASS
評 定	PASS	備 考

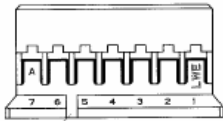
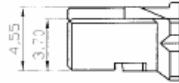
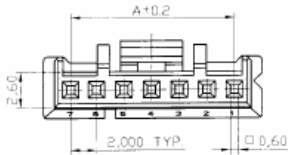
PROFESSOR TECHNOLOGY CO.,LTD.



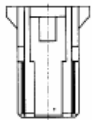
PROFESSOR TECHNOLOGY CO.,LTD.



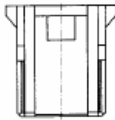
ISOMETRIC VIEW



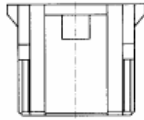
NO. 5,10,15 ONLY.



2PIN LAYOUT



3PIN LAYOUT



4PIN LAYOUT

DIMENSIONS

CIRCUITS	DIM.A	DIM.B	DIM.C	DIM.D
02	2.00	4.40	8.00	2.60
03	4.00	6.40	8.00	3.80
04	6.00	8.40	10.00	4.50
05	8.00	10.40	12.00	4.50
06	10.00	12.40	14.00	4.50
07	12.00	14.40	16.00	4.50
08	14.00	16.40	18.00	4.50
09	16.00	18.40	20.00	4.50
10	18.00	20.40	22.00	11.20
11	20.00	22.40	24.00	11.20
12	22.00	24.40	26.00	11.20
13	24.00	26.40	28.00	11.20
14	26.00	28.40	30.00	11.20
15	28.00	30.40	32.00	11.20
16	30.00	32.40	34.00	15.20

ORDER INFORMATION:

2070S	XX	0	0	(NATURAL COLOR)
2070S	XX	0	0	X
CIRCUITS NO				COLOR NO
NYLON 66 94V 0				B BLACK

NOTES:

- 2 ~ 16 CIRCUITS
- MATERIAL: NYLON 66 94V-0
- USE WITH 2053T SERIES CRIMP TERMINAL
- MATES WITH 2071P, 2072P SINGLE-ROW SERIES HEADERS.

RoHS Compliant

Customer Drawing

MATERIAL: SEE NOTES	
FINISH(COLOR): SEE NOTES	
FILE NAME:	
A	NEW RELEASE 27/OCT/08
REV	REVISION RECORD ECN NO DATE

SCALE	FREE	SHEET	1 OF 1
DRAWN BY: R.P.S.	27/OCT/08	UNIT	mm REV. A
APPROVED BY: J.Lin	27/OCT/08	DRAW NO.	
GENERAL TOLERANCE:		(AQ) 2070SXX00-X	
ANGLE:	DIM:	TITLE:	
±3°	±0.5	2.0 PITCH HOUSING	
	x	WITH LOCK	
	xx		
	xxx		
	xxxx		