

PROFESSOR TECHNOLOGY CO.,LTD

INTRODUCTION CP04F-RG316-2.5M-SMA/Male (850/900/1800/1900/2100MHz)

1. GENERAL DESCRIPTION

Model No	PRODUCTS P/N
CP04F-RG316-2.5M-SMA/M	CP04F-316-2.5M-SMA/M

Below is a table summarizing the antenna design specification.

1.1 Electrical Properties

Parameter	Description
Frequency Band	850/900/1800/1900/2170 MHz
Nominal Impedance	50 ohm
Polarization	Vertical
Electrical Wave	$\frac{1}{4} \lambda$ Dipole
V.S.W.R	2.0:1
Antenna Average Gain	2 dBi
Note: Gain includes the cable loss	

1.2 Mechanical Properties

Parameter	Description
Antenna Type	External Antenna
Antenna Material	P.P
Touch Type	Screw Type
Connector Type	SMA 180° (Male)
Antenna Cable	RG316
Cable Length	2500 mm \pm 50
Antenna Color	Black
Operating Temperature Range	-30°C~+60°C
Storage Temperature Range	-35°C~+75°C

PROFESSOR TECHNOLOGY CO.,LTD

承認書

SPECIFICATION FOR APPROVAL

CORPORATION:

CUSTOMER'S PART NO:

DESCRIPTION:

MODEL PART NO: CP04F-2.5M-SMA/M DATE: 20100914

	✓	CUSTOMER'S SIGNATURE	NOTE
FULL APPROVED			
CONDITIONAL APPROVED			
REJECTED			

DESIGNER SIGNATURE		DIRECTOR SIGNATURE	
--------------------	--	--------------------	--

普傑國際股份有限公司

PROFESSOR TECHNOLOGY CO., LTD.

5F, No. 25-1, Jilin Rd., Chung-Li Industrial Park Taoyuan 320, Taiwan(R. O. C) TEL:+886-3-4551081

E-mail: jack@professor.com.tw

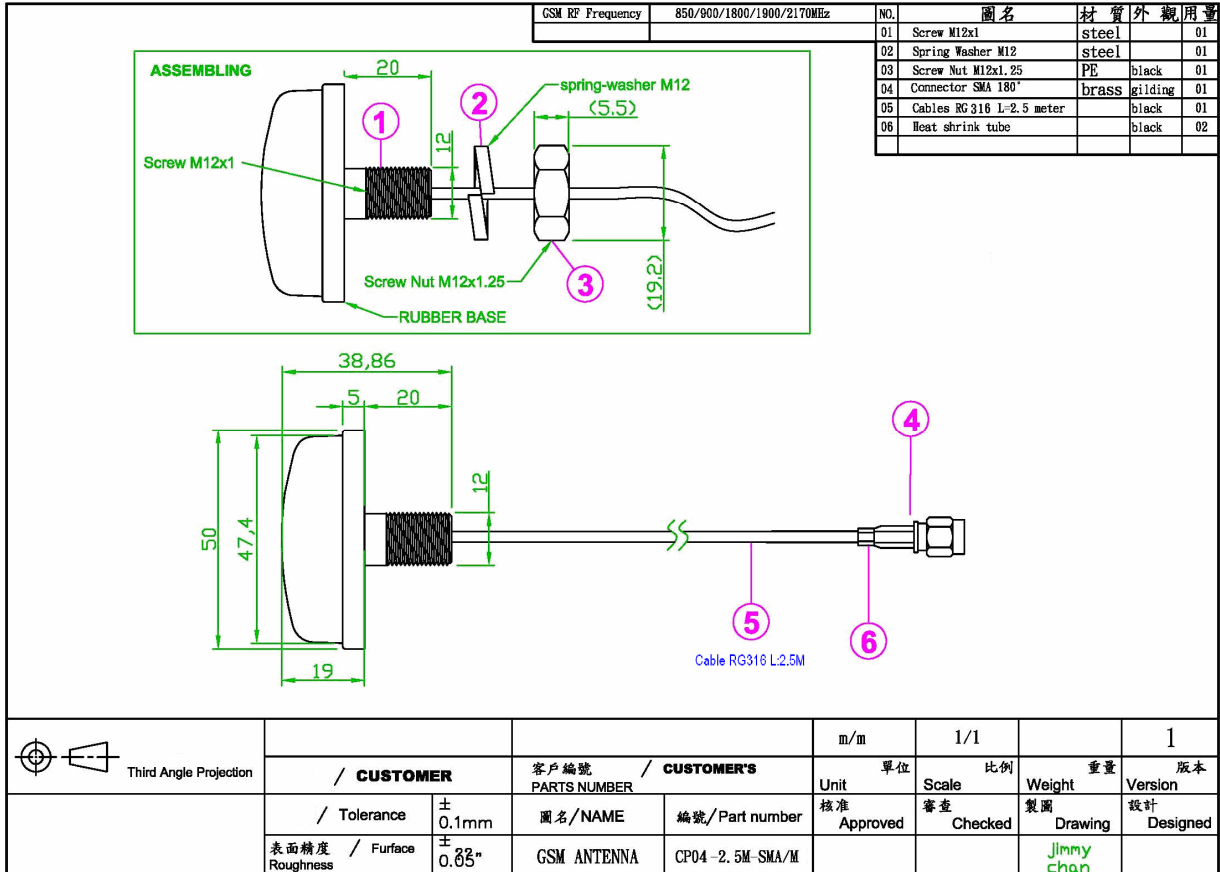
FAX:+886-3-4553913

<http://www.professor.com.tw>

FAX:+886-3-4522585

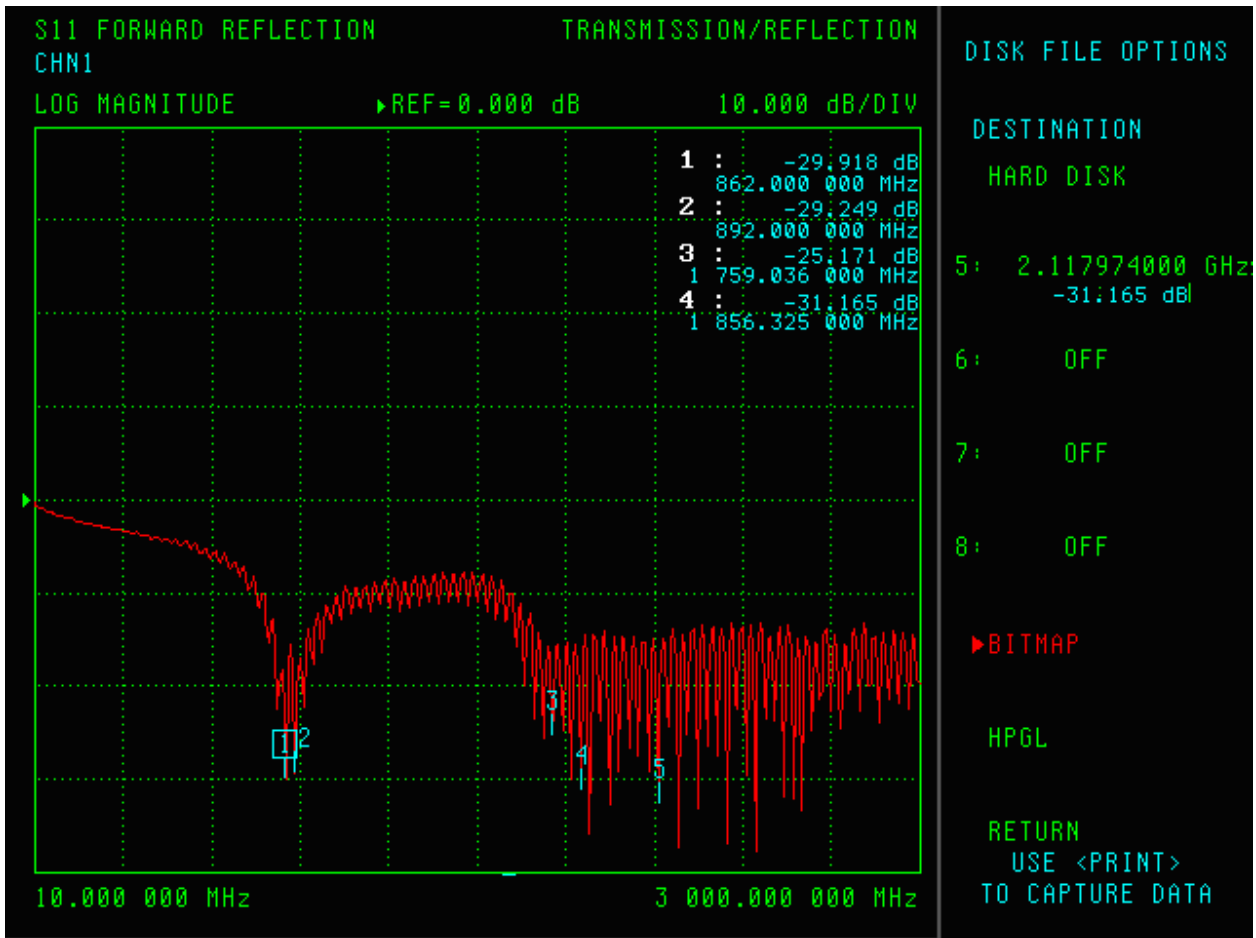
PROFESSOR TECHNOLOGY CO.,LTD

2. Appearance

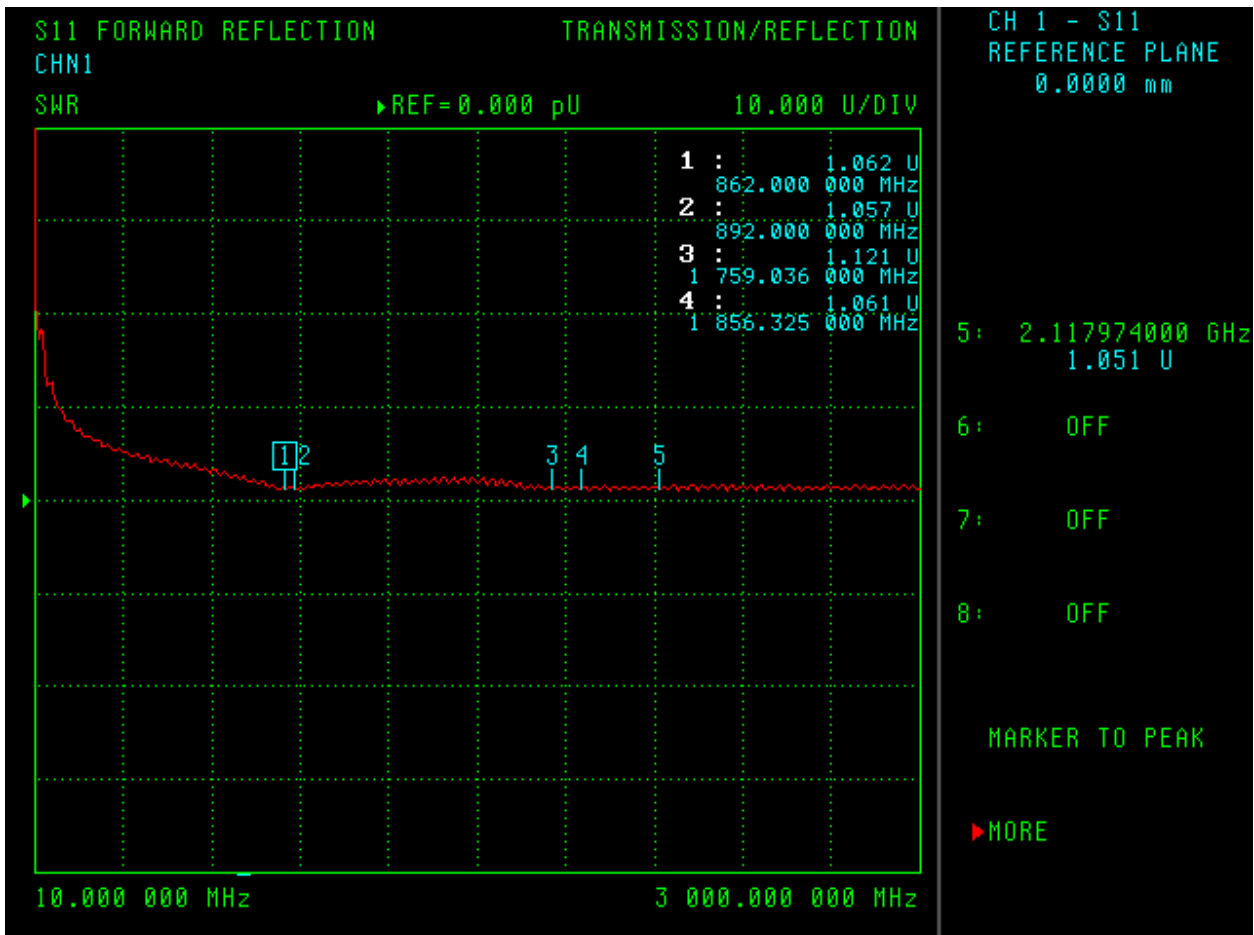


PROFESSOR TECHNOLOGY CO.,LTD

3. FREQUENCY



PROFESSOR TECHNOLOGY CO.,LTD



PROFESSOR TECHNOLOGY CO.,LTD

